



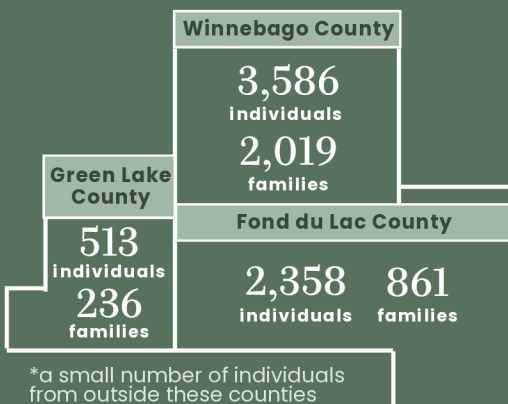
2024 Community Impact

ADVOCAP is a Community Action Agency dedicated to helping individuals and families overcome poverty and achieve long-term stability in Fond du Lac, Green Lake, and Winnebago Counties in Wisconsin.

In 2024, we assisted

6,486
individuals

3,099
families



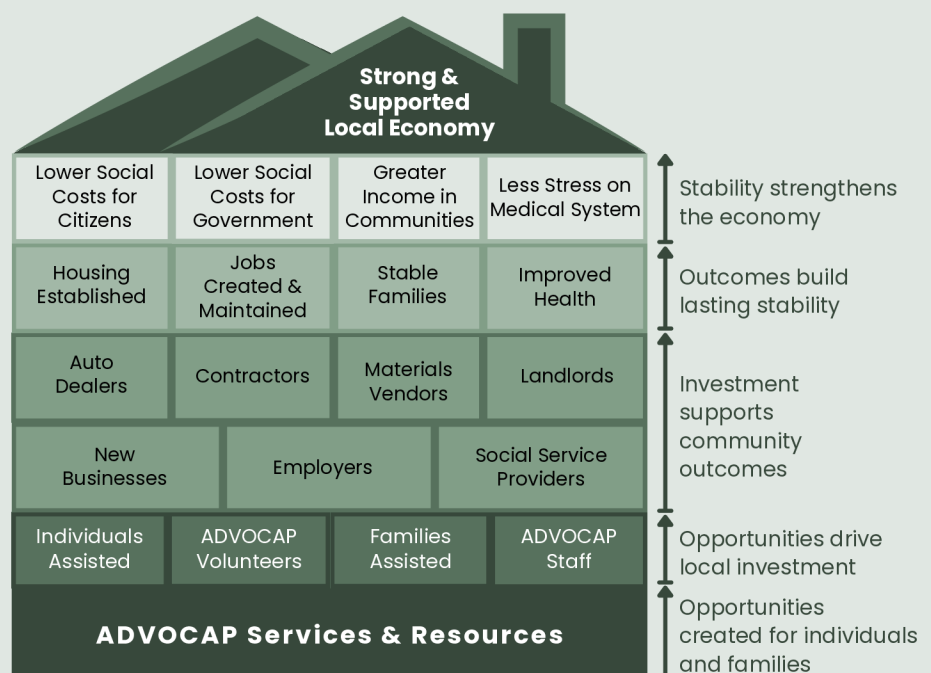
*a small number of individuals from outside these counties accessed our services in 2024

ADVOCAP Economic Impact: Beyond Direct Services

At ADVOCAP, our mission goes beyond providing services. We help create opportunities that empower people and strengthen entire communities. By connecting low-income individuals with essential resources, we help them achieve self-sufficiency, creating a ripple of economic and social change.

Just as a strong home is built from a solid foundation, a prosperous economy is built by equipping people with the tools for self-sufficiency. ADVOCAP's services and resources help strengthen that foundation.

Even one seemingly small step toward stability, like securing a job or starting a business, can strengthen the entire structure, building financial and social growth that supports the community and economy as whole.





2024: Impact by the Numbers

Supporting children & families

359 children

provided quality education through the Head Start preschool program



333 families

given access to comprehensive support services and engagement activities through Head Start programming



357 children

received health screenings through Head Start

126 children

received academic support from Foster Grandparent volunteers

Improving housing stability

393 families

received support to maintain stable housing



1,171 people

in healthy and energy-efficient homes due to Home Energy Services



82 units

of affordable housing managed by ADVOCAP



\$1,133,095

in rent support paid to **142** landlords

\$2,110,880 paid to

40 local contractors and **21** materials vendors for weatherization services

464 homes

improved through Home Energy Services

Increasing food security



175,368 meals

& snacks served through the Senior Nutrition & Head Start Programs

1,057 seniors

and **359 children** accessed nutritious food to support their overall health

71 households

grew their own fresh food through ADVOCAP community gardens

20,880
congregate
meals
for seniors

99,011
home
delivered
meals
for seniors

55,477
meals
& snacks for
Head Start
children

1,606,611 pounds of food distributed to pantries through TEFAP, providing **23,537 people** immediate food assistance



Creating workforce opportunities



70 businesses
started, expanded, or
maintained through loans

154 entrepreneurs
received technical
assistance

29 jobs
created at **13**
new businesses



109 households
gained access to
reliable vehicles to
get to work through
Work N Wheels

\$200,054 paid to
30 dealerships, private
sellers, and repair shops
for Work N Wheels
purchases and repairs

187 jobs
reached thanks
to Work N Wheels
vehicles
financed



172 individuals
accessed adult
education and
job skills training

Addressing homelessness



826 individuals
from **376 families**
helped to meet
essential needs in
times of crisis

1,169 people
from **393 families**
received support to
maintain stable housing

100 individuals
supported at the Opportunity Center,
receiving on average **5 services**

**Of the participants at the
Opportunity Center in 2024,**

72%
had mental
health needs

30%
required disability
assistance

14%
aged 65 or older



Building community connections



369 volunteers
donated their time to our
community as part of our
senior volunteer programs

86,221 hours
donated by volunteers, valued at
\$2,747,001 at the state rate
in Wisconsin, **\$31.86** per hour



82 seniors received
2,126 rides from
ADVOCAP volunteers to
attend essential
appointments

27 volunteers
supported the academic
development of

126 children
as part of Foster
Grandparents



Understanding poverty in our community

While our community continues to grow and thrive in many ways, the rising cost of living makes it increasingly difficult for many individuals and families to meet their basic needs. While official poverty levels provide a baseline measure, they do not reflect the true financial reality for many households.

The living wage — the income required to afford essentials such as housing, childcare, healthcare, food, and utilities — **far exceeds the federal poverty threshold and varies significantly by region.**

As a result, the number of individuals and families who cannot afford their basic expenses is likely far greater than census data indicates.

For too many working households, wages have not kept pace with increasing costs, leaving them vulnerable to financial instability, food insecurity, and housing uncertainty.

These concerns are exponentially magnified for those who are not working or who are unable to work.

Wage Information for ADVOCAP Service Area, from MIT Living Wage Calculator

Figures in this chart are averaged for Fond du Lac, Green Lake, and Winnebago Counties

	1 adult			2 adults (1 working)			2 adults (both working)		
	0 child	1 child	2 child	0 child	1 child	2 child	0 child	1 child	2 child
living wage	\$19.96	\$35.93	\$46.91	\$28.04	\$33.78	\$37.79	\$13.89	\$20.38	\$26.00
poverty wage	\$7.52	\$10.17	\$12.81	\$10.17	\$12.81	\$15.46	\$5.08	\$6.41	\$7.73
minimum wage	\$7.25	\$7.25	\$7.25	\$7.25	\$7.25	\$7.25	\$7.25	\$7.25	\$7.25

Source: livingwage.mit.edu

The table above is sourced from the MIT Living Wage Calculator, averaging hourly data from Fond du Lac, Green Lake and Winnebago Counties. The Calculator provides a measure of the hourly wage needed for individuals and families to meet their basic living expenses without public assistance.

The tool factors in essential costs such as housing, food, transportation, healthcare, childcare, and taxes. These costs are adjusted according to regional data.

By comparing these figures with state minimum wages and poverty wage estimates, this data offers valuable insights into the challenges faced by individuals and families, and the barriers to achieving self-sufficiency.

For example, a single parent in our service area would need to make **\$74,700** or **\$35.93 per hour** to support their family's needs. Annual expenses* include:

- **Housing:** \$12,299
- **Childcare:** \$12,521
- **Food:** \$6,147
- **Transportation:** \$12,103
- **Medical:** \$6,620
- **Internet & mobile:** \$1,525
- **Civic:** \$5,504
 - includes reading, education, hobbies, pets, and entertainment
- **Other:** \$7,900
 - includes apparel, personal care items, and household goods
- **Taxes:** \$10,124

**expenses shown are an average of the three counties in our service area*